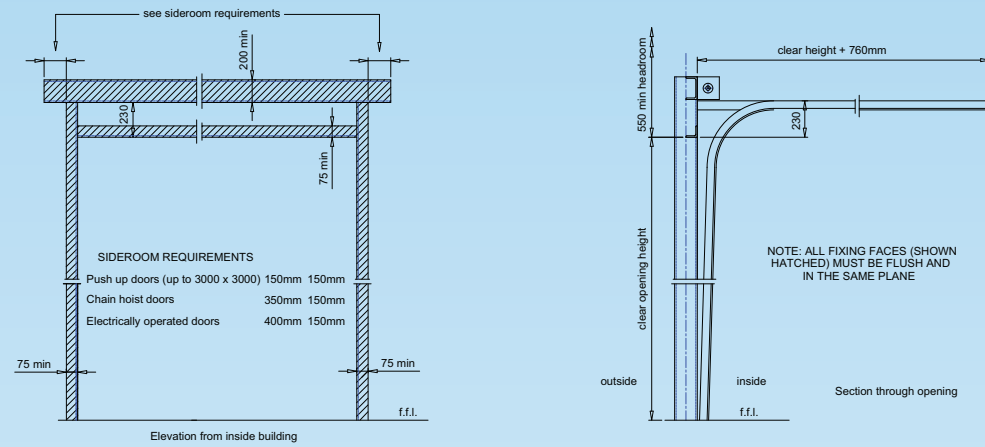
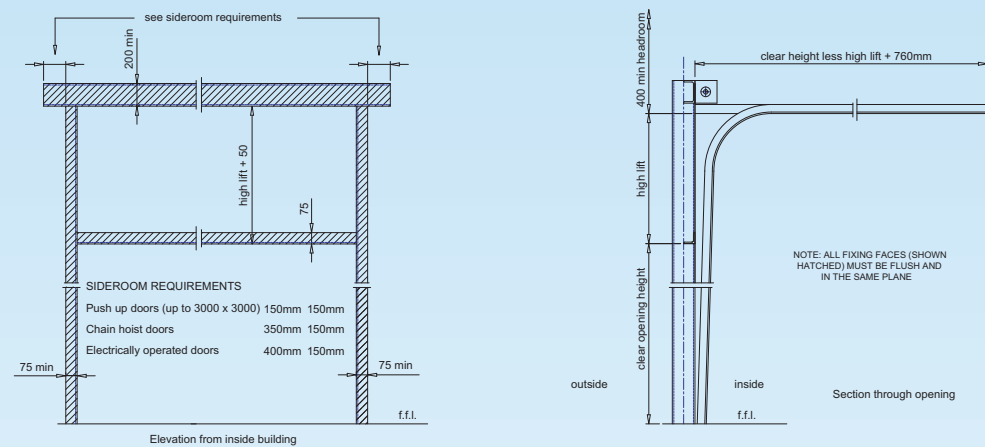


SUMMARY OF STRUCTURAL STEELWORK DRAWINGS

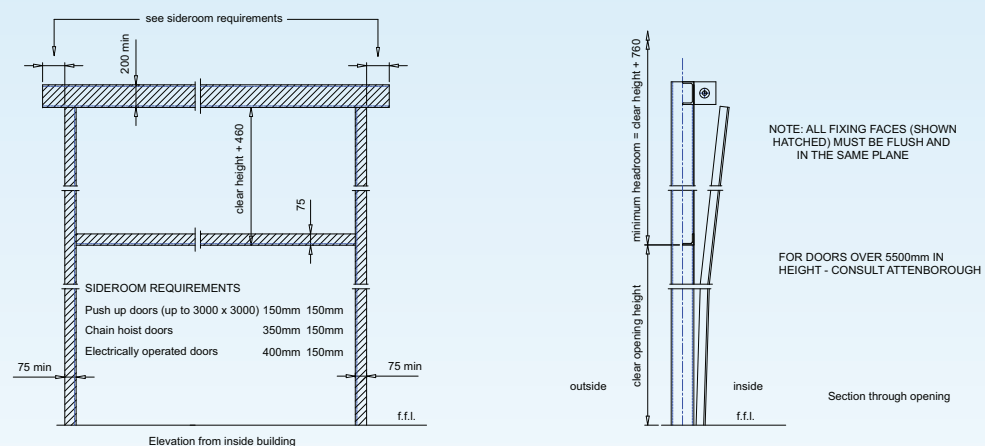
STANDARD LIFT TRACK



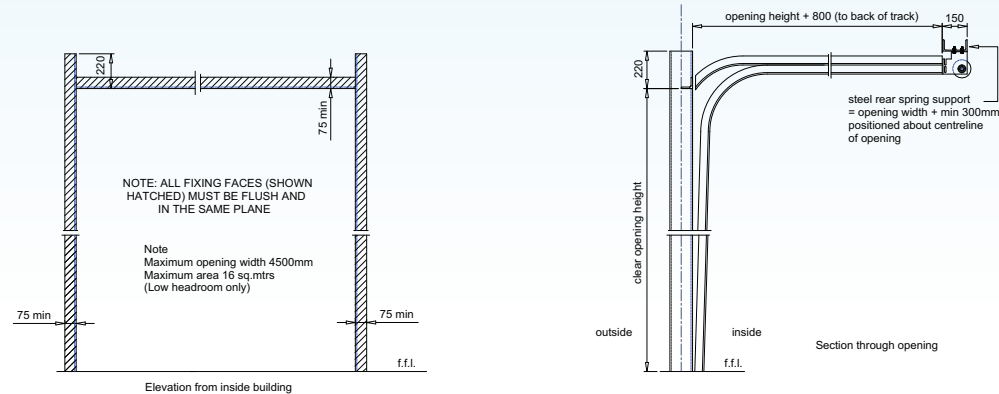
HIGH LIFT TRACK



VERTICAL LIFT TRACK



LOW HEADROOM LIFT TRACK



INSULATED SECTIONAL OVERHEAD DOORS



ATTENBOROUGH

THE UK'S PREMIER DOOR MANUFACTURER AND INSTALLER

MERLIN WAY, QUARRY HILL INDUSTRIAL PARK, ILKESTON, DERBYSHIRE DE7 4RA

Telephone 0115 930 0815 Fax: 0115 944 8930

Email: information@attenboroughdoor.co.uk

www.attenboroughdoor.co.uk



The policy of the company is one of continuous product development. The company reserve the right to make such alterations in design and manufacture as they consider necessary without notice. Drawings, Specifications, and other details are not binding in detail.

INTRODUCTION

INSULATED SECTIONAL OVERHEAD DOORS

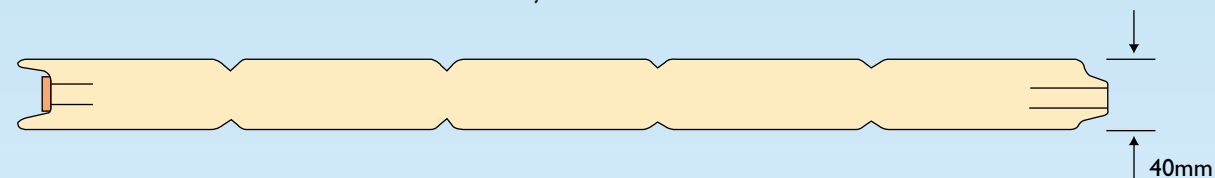
Attenborough are one of the leading industrial and commercial door manufacturers in the UK and are recognised for their quality products and superior after-sales service.

WHY SPECIFY AND SELECT INSULATED SECTIONAL OVERHEAD DOORS?

- Attenborough Insulated Sectional Overhead Doors give guaranteed high thermal performance, avoiding cold bridging compared with traditional roller shutters
- Attenborough Insulated Sectional Overhead Door panels have a thermal performance that is greater than required by Building Regulations
- Windows can be installed in single or multiple panels
- Panels can be prefinished in an extensive range of colours and materials
- Doors accidentally damaged can be easily repaired using replacement materials and components

ATTENBOROUGH INSULATED DOOR PANEL

Insulation is afforded to the whole door area – even at joints.



SPECIFICATION

PANEL

The door panel provides the overall Insulated Sectional Overhead Door assembly with its main characteristics and therefore the following detailed information is provided to assist when the door performance needs to be explained.

COMPOSITION

The use of quality materials and precise manufacturing controls ensure long service life in normal industrial and commercial applications. All Attenborough Insulated Door Panels conform to the Building Regulations requirements for Industrial Doors, and the durability of finishes are those specified by our steel suppliers technical specifications department.

Outer and Inner Sheet:

0.5mm hot dipped galvanised steel. Both inner and outer sheets are supplied "V" grooved to provide increased lateral strength, and the whole panel is made-up to form a "T+G" joint top and bottom.

Reinforcing strips are fixed internally to ensure secure fixings for the roller carriers and hinges.

Core:

39mm thick rigid polyurethane foam, density 40kg/m³.

Seal:

Low density compressible foam at panel base, and PVC Tape to the panel nose, all factory applied.

THERMAL PERFORMANCE

Attenborough sectional door panels provide high levels of insulation. The foam core between the inner and outer steel sheets of the door panel creates effective interruption of cold bridges, thus preventing transmission of heat or cold. See Declaration of Incorporation for test results and performance data.

ACOUSTICS

The 40mm insulated door panel gives sound reduction of (Rw) 25db. Please note; this is for the panel only, and does not include joints, i.e. a fully installed door.

SPECIFICATION cont...

PANEL (CONTINUED)

COLOURS & FINISHES

Outer Skin:

The outer skin is finished and coloured to match most contemporary building cladding. Please see separate leaflet for range of finishes and colours.

Inner Skin:

The internal liner skin is finished in RAL 9010 white, polyester coated, stucco embossed galvanised steel as standard.

A separate list and sample swatch of the current colour range is available from Attenborough Customer Services department.

THERMAL BOW

It should be noted that when a door is due to be positioned where it is likely to receive direct sunlight then dark colours should be avoided due to the potential of thermal bow. Contact Attenborough Technical Department for further information.

PANEL OPTIONS & ACCESSORIES

A range of windows in various sizes can be incorporated in the panel, the standard being 600 x 300mm with radiused corners.

Each panel is fitted with pre-punched galvanised steel end caps and the top and bottom panels are finished with an aluminium retainer which holds the top and bottom EPDM seals.

A range of locking options are available.

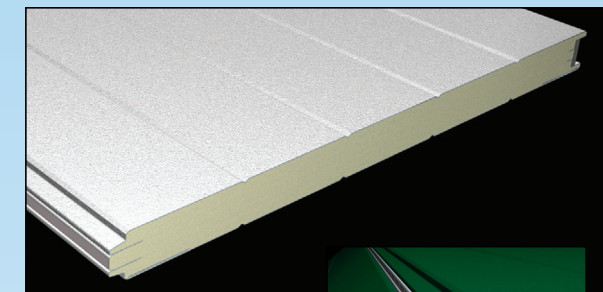
Wicket doors are available 800 x 1800mm approx. 150mm above floor level, supplied complete with cylinder type locking.

OPERATION

Manual operation by pull rope or endless hand chain is standard.

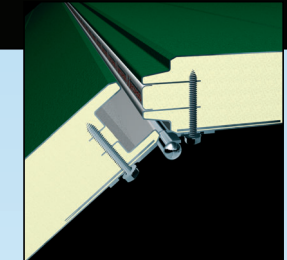
Electrical operation with various automatic control systems is available as an option.

Power operated doors comply with the Machinery Directive 89 / 392 / EEC and carry the CE symbol.



DIMENSIONS:
610 x 40 (500 x 40 gentian blue and sunset red)

WEIGHT:
6.5kg/lin.m (5.2kg/lin.m)



ATTENBOROUGH INDUSTRIAL DOORS

DECLARATION OF INCORPORATION

Attenborough Sectional Overhead Doors are manufactured in accordance with the requirements of the harmonised European Standards BSEN 13241-1:2003. The Swedish National Testing and Research Institute (SP) have conducted the necessary tests on behalf of Attenborough Industrial Doors Ltd. A copy of the test report is available on request.

NOTE: It is our policy to supply doors that meet all relevant Building Regulations and Health & Safety Requirements, wherever it is practical and we urge our customers to familiarise themselves with their onward obligations. For further information please contact Attenborough Industrial Doors on 0115 930 0815.

